



Edith O'Donnell Institute of Art History Newsletter

Report of the Director

Since the inauguration of the Institute with our distinguished guests —Patricia Rubin, Director of the Institute of Fine Arts, New York; Thomas Gaetgens, Director of the Getty Research Institute; Michael Conforti, Director of the Clark Art Institute; and Wolf Tegethof, Director of the Zentralinstitut für Kunstgeschichte in Munich; the Institute has been in “formation” mode.



Dr. Richard R. Brettell, Founding Director of The Edith O'Donnell Institute of Art History, at the Inauguration Ceremony on Wednesday, October 29, 2014, at the DMA.

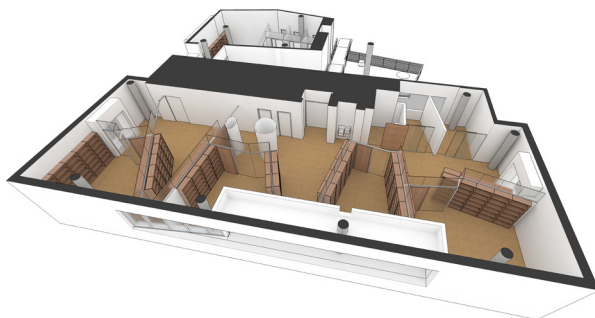


Inaugural toast at the DMA with distinguished guests.

UTD Headquarters

We are now underway on the construction of our UTD headquarters in the Edith O'Donnell Arts and Technology Building. This nearly 3,500 square foot area will consist of offices for four of the O'Donnell Endowed Professors, six Ph.D. students, 2 support staff, and 2 visiting scholars. These will be knitted together with various meeting and seminar spaces, ample bookshelves, and space for the new Bass

Digital Art History Lab. It will be our beachhead on campus and is designed by Cunningham Architects. It will initially feature a complete collection of London and New York Art Auction catalogues from 1960 to the present that will enable visitors and graduate students to become aware of the staggeringly large (and neglected by many art historians) number of works of art on the active art market in the past two generations. It is the first part of an important gift to the Institute of the art library of the distinguished New York collector, Mr. Ivan Philips. The space will be available in May of this year.



The Cunningham Architects' design for the Edith O'Donnell Institute of Art History headquarters at UTD, located in the Edith O'Donnell Arts and Technology Building.

* Inauguration photos on page 1 are credited to Tamytha Cameron Photography.

Dallas Museum of Art Headquarters

Our formal partnership with the DMA continues apace, and the IT, real estate, and legal staffs of both UTD and the DMA are hard at work hammering out a formal agreement that will make it possible for the University to construct its 2,500 square foot DMA headquarters on the Second Floor of the Hamon Building of the DMA. This headquarters will have small offices for four visiting scholars, smaller spaces for four Ph.D. students at UTD, a receptionist area, a living room, and two seminar-teaching spaces. It will open directly on the Mayer Art Library at the DMA and is being designed by Buchanan Architects in Dallas. It is designed as a meeting and research facility for the entire community of Art Historians in North Texas.



Buchanan Architects' design for the Edith O'Donnell Institute of Art History Headquarters at the DMA.

Newly Appointed Assistant Director



Dr. Sarah Kozlowski,
Assistant Director of the
Edith O'Donnell Institute
of Art History.

The Institute is proud to announce the appointment of Dr. Sarah Kozlowski as the Assistant Director in charge of its academic programs. Dr. Kozlowski will commence her duties on February 1, 2015, working with Pierrette Lacour and myself to chart the future of the Institute. With an MA in Art History from Williams College (and the Clark Art Institute) and a Ph.D. in Art History from Yale University, Sarah has been an important presence in the DFW Art Historical community for several years, both as a teacher/fellow at SMU and as an independent scholar. A scholar of Renaissance painting, she will begin her tenure at the Institute by planning what we hope to be an ambitious MA Program in Art History and by working as the academic coordinator of the Institute with its various DFW Partners.

Conservation Science Chair

UTD's own Bonnie Pitman has taken the leadership role for the Institute in our first academic search for a Conservation Scientist. Working with Dean Novak of UTD's School of Natural Sciences and Mathematics, and Mark Leonard, the DMA's chief conservator, Ms. Pitman has travelled to Chicago and New York to learn from the ambitious programs between Northwestern University and The Art Institute of Chicago, as well as NYU and the Metropolitan Museum. The Committee already has an important group of applicants, and we have every intention of making a chaired appointment before the summer.



Dr. Bonnie Pitman,
Distinguished Scholar in
Residence & Co-Director, CISM.

Our First Jointly Sponsored Symposium: Curating Goya

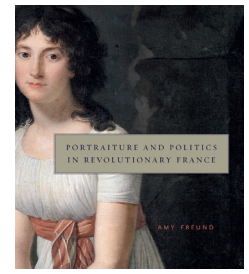
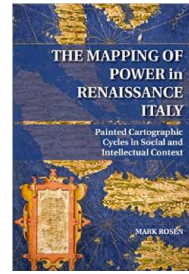
The Symposium will take place at the Meadows Museum, February 6-7, 2015. In conjunction with the closing of the major exhibition of the Meadows Museum's complete set of the print cycles of Francisco Goya, the Institute is proud to co-host a symposium on the curating of Goya Exhibitions with major scholars and curators from Europe and America travelling to Dallas for a scholar's day and a formal symposium.

More information can be found on page 9.

Please join us for this special event. The symposium is free of charge, and we want to show off our invigorated art historical community with our distinguished visitors.

Book Announcements

We are happy to announce the publication of two major academic books, one by a member of the Institute's Faculty from UTD and another by a distinguished member of the larger DFW Art Historical community.



Mark Rosen's new book *The Mapping of Power in Renaissance Italy: Painted Cartographic Cycles in Social and Intellectual Context* was recently released by Cambridge University Press and is the culmination of more than a decade of research on these neglected painted maps in context.



Amy Freund's new book, published by the Pennsylvania State Press, is entitled *Portraiture and Politics in Revolutionary France* (is an academic book without a colon possible?). Amy recently switched from FW to D and from TCU to SMU, nearer her Oak Cliff perch.

Both Mark and Amy are part of the burgeoning "Berkeley Mafia," which has become such an important part of the intellectual life of art history in North Texas. Another Berkeley graduate, Heather MacDonald masterminded the superb exhibition and related book produced by the Dallas Museum of Art: *Bouquets: Still-life Painting Chardin to Matisse* at the DMA, and George Shackelford from the slightly older "Yale Mafia" oversaw the exhibition and book for the epochal exhibition, *Faces of Impressionism: Portraits from the Musée d'Orsay* at the Kimbell Art Museum.

Those of you with 2014 books that we have neglected—out of ignorance!—please tell us!

Dr. Richard R. Brettell
Founding Director, The Edith O'Donnell Institute of Art History
and the Margaret McDermott Distinguished Chair
Co-Director, CISM (Center for the Interdisciplinary Study of Museums)

Edith O'Donnell Institute of Art History (EODIAH) Sponsors Two New Graduate Seminars & Welcomes Visiting Scholars

Note from Dr. Brettell

The Edith O'Donnell Institute of Art History is sponsoring two new graduate seminars for the spring term of 2015. Both were designed to show the possible range of our future curriculum, and we urge graduate students to consider taking one, or both, of these courses.

The first is taught by Fernando E. Rodriguez-Miaja, who is a professor at the Autonomous University in Mexico and the chief art historical advisor to the new Museum of the International Baroque, being planned for a major building by the Pritzker prize winning Japanese architect, Toyo Ito, in Puebla. I am on the International Advisory Committee of this museum and met Dr. Rodriguez-Miaja in Puebla. I was so impressed by the quality of his scholarship, the range of his thinking, and the level of his English (he did graduate work at the University of Texas at Austin, our "mother ship"), that I asked him to teach a course on the International Baroque in all its complexity. He is particularly opened to the participation of ATEC graduate students, because the museum itself will use some of the most advanced technology of any museum

Contents

Report of Director	1 - 3

EODIAH Sponsors Two New Graduate Seminars	3 - 4

Next DFWAHN Gathering	4

Ad Astra Lecture Series	5

The Art Effect	5

Dallas Medianale 2015	6

TCU "State of the Union"	6

Fort Worth Contemporary Arts "1-7" Exhibition	7

Sharing Spaces	7

Japanese Fashion Symposium	8

Benevolence and Wisdom	8

Goya Scholar's Day & Symposium	9

Chinese New Year	10

Plants Inside	10

Gallery Exhibitions, Upcoming Lectures, Concerts & Performances, and Films	10 - 14

on the planet. The course will be a real eye-opener, even for students who took Professor Rosen's course on the Baroque last term, because it will deal with the GLOBAL Baroque, not only with its European manifestations. Dr. Rodriquex-Miaja will commute from Mexico City to teach the course especially for the Institute.



Dr. Karin Oen, Crow Collection of Asian Art.

The second course is devoted to Contemporary Art in Asia and is being taught by Dr. Karin Oen of the Crow Collection of Asian Art. Dr. Oen has her doctorate from MIT, whose List Center for the Visual Arts is one of several important models for The Edith O'Donnell Institute of Art History. It will be the first graduate seminar devoted to the explosion of international-level art throughout Asia that has occurred in the last two generations, starting in Japan and India, but now embracing all of Asia. Given the new world in which we live, it will no longer be possible to content ourselves by knowing only American contemporary art, and this course will augment those of Dr. Terranova by focusing on Asian contemporary visual culture in all its breadth and diversity. Dr. Oen is also open to working with ATEC students as well as those from Aesthetic Studies, History of Ideas, and Literary Studies.

In addition, we also have James Rodriguez, a Ph.D. candidate from Yale University, visiting this semester. James received a B.A. in Literary Studies from UTD School of Arts and Humanities (summa cum laude) in 2005 and a M.A. in Art History at the University of Texas at Austin in 2007. He is currently writing a dissertation on Byzantine icons and anticipates submitting the project in December 2015. He will be teaching a course entitled "Art in the Age of Crusades, 1095-1291." The course looks at art objects and monuments produced and used by participants in Crusades launched during the 11th, 12th and 13th centuries, and it investigates what such objects can tell us about the social, political and religious climates of Western Europe, Byzantium and the Levant in the later Middle Ages.



James Rodriguez, Ph.D. candidate from Yale University.

Next Gathering for DFWAHN

Sun., March 29, 2015
4:00 pm - 6:00 pm
THE WAREHOUSE

Invited to Tour: Geometries On and Off the Grid: Art from 1950 to the Present

"Geometries On and Off the Grid" focuses on the role of geometry in postwar art from the United States, Europe, Japan, and Latin America. The exhibition will include work from The Faulconer Collection and The Rachofsky Collection, as well as important loans from the Dallas Museum of Art, The Rose Collection, and The Collection of Marguerite Steed Hoffman. Over 100 artists will be represented in the exhibition, including Robert Irwin, Donald Judd, Anne Truitt, Ellsworth Kelly, Louise Bourgeois, Gordon Matta-Clark, Piero Manzoni, Geta Bratescu, Lucio Fontana, Jiro Takamatsu, Nobuo Sekine, Doris Salcedo, Lygia Pape, Lygia Clark and Hélio Oiticica.

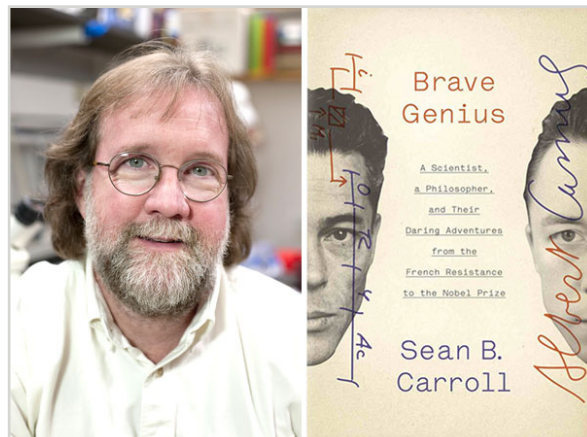
Ad Astra Lecture Series

Sean B. Carroll

Edith O'Donnell Institute of Art History
University of Texas at Dallas

The Ad Astra Lecture Series presented a public talk by Sean B. Carroll, entitled "Jacques Monod and Albert Camus: A Scientist's and a Philosopher's Daring Adventures from the French Resistance to the Nobel Prize." Based on his latest book, *Brave Genius*, the talk was held Wednesday, January 14, 2015, at the Horchow Auditorium in the Dallas Museum of Art and was open to the public.

In this scintillating art-and-science talk, Dr. Carroll chronicled the adventures of Jacques Monod, a co-founder of molecular biology, from the dark years of the German occupation of Paris to the heights of the Nobel Prize, his friendship with the great writer Albert Camus, and his emergence as a public figure and leading voice of science. Carroll is author of *Brave Genius: A Scientist, a Philosopher, and Their Daring Adventures from the French Resistance to the Nobel Prize* and *Endless Forms Most Beautiful: The New Science of Evo Devo*. *Endless Forms Most Beautiful* was adapted by PBS into an episode of NOVA.



READ MORE

This talk was sponsored by the Edith O'Donnell Institute of Art History (EODIAH) at UT Dallas and is the inaugural lecture of the Ad Astra Lecture Series.



Panel Discussion

Thursday, January 15, 2015 11am - 1pm

Edith O'Donnell Arts & Technology building - Main Lobby

The Art Effect:

The Translational Ecology of Contemporary Art

In conjunction with the Loris Gréaud exhibition at the Dallas Contemporary opening January 17, 2015, The Arts & Technology program and The Center for Translation Studies at The University of Texas at Dallas are hosting a panel discussion with local and international distinguished figures in contemporary art & art education. The objective of this forum is the intellectual investigation of translation, postproduction and relations in the context of contemporary art.

PANEL

Frank Dufour, Director of Graduate Studies, ATEC, UTD & Artist (Moderator)

Justine Ludwig, Senior Curator, Dallas Contemporary

Noah Simblist, Chair & Associate Professor SMU & Artist

Charissa Terranova, Associate Professor of Aesthetic Studies, UTD & Art Critic

Distinguished International Guests: Nicolas Bourriaud, Éric Mangion, and special appearance by Loris Gréaud.

READ MORE



The MAC is proud to be host venue for the Dallas Medianale 2015

Beginning January 9, 2015, the Video Association of Dallas (VAD) will present the Dallas Medianale at the McKinney Avenue Contemporary (the MAC).

The Dallas Medianale will comprise installations, screenings, and intermedia performances in the galleries and black box theater of the MAC, showcasing works by internationally renowned artists. We will revisit pioneering computer films alongside bleeding-edge experiments in moving images and interactivity. Works will range from iconic achievements in early video art to immersive performances with radical repurposing of obsolete video technology.

Artists will include Francis Alÿs, Andrew Blanton, Kyle Evans + James Connolly/Cracked Ray Tube, Harun Farocki, Gary Hill, Owen Kydd, Liz Larsen/LZX Industries, Dani Leventhal, Jodi Mack, Sean Miller, Bruce Nauman, Tara Nelson, Jennifer Reeder, Michael Robinson, William Sarradet, Lillian Schwartz, Joe Sola, Micah Stansell, Deborah Stratman, Stan Vanderbeek, John Whitney, and many more.

For a schedule of events, [click here](#).

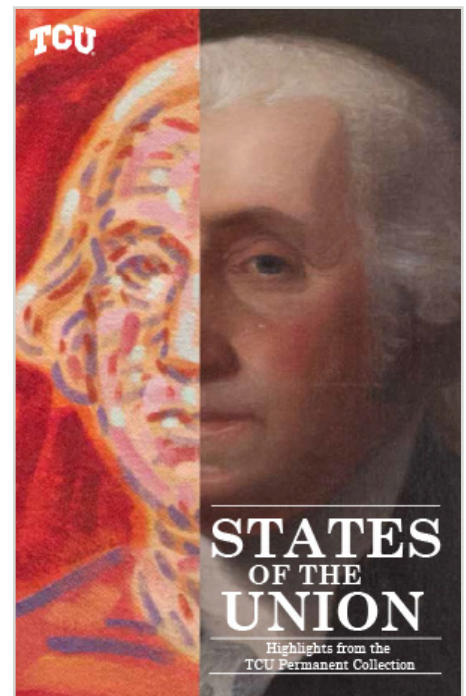
TCU Permanent Art Collection in “States of the Union” at Moudy Gallery

States of the Union:

Highlights from the TCU Permanent Art Collection
Moudy Gallery, January 20 – February 19, 2015

Opening Reception Tuesday, January 20th, 6:30 - 8:30 pm

The Art Galleries at TCU are proud to announce the first public exhibition composed of selected highlights from TCU’s permanent art collection. The fruit of a semester-long project assigned to the first-year Master of Arts students in Dr. Mark Thistlethwaite’s art history seminar, The Art Museum, this exhibition constitutes a landmark in the history of TCU. In the spirit of the United States President’s annual State of the Union address, this premier exhibition of TCU artworks seeks to engage the community in a visual exploration of historic issues our country has faced and continues to confront.



The works on display present American history and politics as interpreted by artists, some of whom were employees of Franklin D. Roosevelt’s Works Progress Administration (WPA), civil rights leaders, and military veterans. The artists featured in the exhibition are Will Barnet, Alice Neel, Lee Krasner, Romare Bearden, Larry Rivers, McKie Trotter, Andy Warhol, Bill Mauldin, Luis Jiménez, Antonio Alvarez and Jane Stuart.

READ MORE

This exhibition curated by TCU M.A. Art History students: Cathryn Bidal, Lola Clairmont, Alexa Ibarguen, and Anna Kern.

Fort Worth Contemporary Arts:

“1- 7” MFA Group Exhibition, January 16 – March 7, 2015

*Amanda Arredondo, Mason Bryant, Courtney Hamilton,
Alyssa Hawkins, Fernando Johnson, Layla Luna and Max Morris*

Please join us for the Opening Reception:

Friday, January 16, 2015, from 6 - 8pm

An algorithm is a step-by-step procedure for making calculations or processing data. It is a process through which decisions are made and insight is refined, providing solutions to problems or organizing large amounts of information into intelligent categories. In the 21st-century, algorithms have become seamlessly integrated into our everyday lives, including use in smart phone apps and retail promotions, to the choreography of our traffic lights.

In the artist's studio an algorithm translates as practice. Not in the preparatory or repetitive sense but as an organic form of experimentation that explores technique and materials through a series of steps and missteps. As a reflection of their very different practices, 1 – 7 presents the work of current TCU M.F.A. students whose works respond to the idea of algorithms in art-making. Within the parameter of 1 – 7, the artists' reflect on possibilities in making which involve the presentation of a number of objects and ideas, or a progression of processes and narratives.

READ MORE



Image: Alyssa Hawkins, “For Venus,” 2015. Plaster.

Sharing Space: Gyorgy Beck and Sylvia Plachy

The Gallery at UTA

January 20 – February 14, 2015

The University of Texas at Arlington

Arlington - The Gallery at UTA is pleased to present Sharing Space: Gyorgy Beck and Sylvia Plachy, featuring two Hungarian-born artists who ‘share space’ in this exhibition in both the literal and metaphysical sense. Longtime friends, Plachy and Beck are collaborating with a selection of works from their independent careers that demonstrate a shared poetic approach. Both artists create evocative photographic images that convey a similar, often dream-like aesthetic while using very different subjects, mediums and methods. Plachy, an award-winning photographer based in New York, captures humanistic vignettes with her camera that express

her unique viewpoint through subtle choices of subject and focus. Beck, currently a visiting senior lecturer in the Art and Art History Department at UTA, creates films and photo-based works by digitally combining and reworking imagery, and experimenting with printing techniques and surfaces to convey his thoughtful, meditative vision.

READ MORE



Image: Gyorgy Beck, Hood, 2010, mixed media, 9.75” x 9.75” x 2.375”



Image: Sylvia Plachy, Homeless in Chelsea, 1985, silver gelatin print, 15” x 15”

Contemporary Japanese Fashion Symposium at the Crow Collection, January 31, 2015

Please join the Crow Collection of Asian Art for a day-long symposium exploring the art and culture of avant-garde fashion in Japan. This event is held in conjunction with the exhibition *The Mary Baskett Collection of Japanese Fashion*, on view at the Crow through February 22, 2015.



Saturday, January 31, 2015, 10:00 am - 4:00 pm

\$40 for the public, \$20 for Friends of the Crow Collection. We are happy to extend the Friends rate to members of DFWAHN (with the discount code DFWAHN). Space is limited, for reservations and detailed event information please visit: crowcollection.org.



Special Guest Speakers include:

Akiko Fukai, Director and Chief Curator, The Kyoto Costume Institute Cynthia Amneus, Chief Curator and Curator of Fashion Arts and Textiles, Cincinnati Art Museum, and curator of *The Mary Baskett Collection of Japanese Fashion* Patricia Mears, Deputy Director of the Museum at FIT Sharon S. Takeda, Senior Curator and Head of the Department of Costume and Textiles at the Los Angeles County Museum of Art (LACMA)

As well as local fashion designers Dora Yim, Mai Pham, and Jerry Matthews.

Symposium Schedule

10:00 - 10:45 am Cynthia Amneus | *The Mary Baskett Collection*
11:00 - 12:00 pm Akiko Fukai | Keynote Address: 30 Years of Japanese Fashion
1:30 - 2:00 pm Patricia Mears | Japanese Aesthetics and Fashion: Shifting Paradigms
2:00 - 2:45 pm Local Fashion Designer Panel | Pecha Kucha and Q/A
3:00 - 3:30 pm Sharon Takeda | Kimono for a Modern Age
3:30 - 4:00 pm Symposium Panel Discussion | Avant-Garde Fashion: Then, Now, Next



READ MORE

Benevolence and Wisdom:

February 14, 2015 through January 17, 2016

New Gifts from the Collection of Trammell and Margaret Crow

This exhibition features works of art recently donated to the museum at the bequest of Margaret Doggett Crow (1919-2014). Highlights include fine examples of Asian export porcelain, delicately carved jade vessels, and Japanese ivory netsuke. As a collection, these works tell stories from the Neolithic period to the twentieth century, including the interweaving of Daoist, Shinto, Buddhist, and folk traditions with the worlds of Qing dynasty Confucian scholars, Edo period merchants, and the collector's eye for quality and beauty.

READ MORE

Goya Scholars' Day and Symposium

Saturday, February 7, 2015

Bob and Jean Smith Auditorium, Meadows Museum



In the words of one recent author, Francisco Goya (1746-1828) is enjoying a “pop-culture moment.” Two large-scale exhibitions devoted to him opened this fall at the Meadows Museum and the Museum of Fine Arts Boston, and three more will open in Europe next year. With an oeuvre encompassing some 1,800 works, from commissioned portraits to dreamlike fantasies, Goya never ceases to intrigue and surprise viewers. At the same time, his vast and varied output presents particular challenges for its interpretation and display. In a public symposium co-organized by the Meadows Museum and the Edith O’Donnell Institute of Art History, curators of recent and upcoming shows on Goya will discuss how different approaches to exhibiting Goya’s work invite new paths for understanding his art.



Program:

Opening Remarks

10:00-10:10 A.M.

Mark A. Roglán, The Linda P. and William A. Custard Director of the Meadows Museum and Centennial Chair in the Meadows School of the Arts, SMU

Richard R. Brettell, Ph.D., Founding Director, The Edith O’Donnell Institute of Art History and the Margaret McDermott Distinguished Chair, UT Dallas

Introduction

10:10-10:20 A.M.

Alexandra Letvin, Meadows/Kress/Prado Curatorial Fellow, Meadows Museum

Lunch Break

12:30-2 P.M.

Roundtable Discussion led by Alexandra Letvin

2:00-3:30 P.M.

3:30-5 P.M.

Wine & Cheese Reception

Champagne toast to celebrate the arrival of Ferdinand Guillemardet (1798-99) from the Louvre.

READ MORE

Presentations

10:20 A.M.-12:30 P.M.

Frederick Ilchman, Chair, Art of Europe, and Mrs. Russell W. Baker, Curator of Paintings, Museum of Fine Arts, Boston: “A ‘Reshuffled Retrospective’ in Boston”

Juliet Bateau, Independent Scholar: “Goya: A ‘Universal Language’ in all its Themes and Variations”

Xavier Bray, Arturo and Holly Melosi Chief Curator, Dulwich Picture Gallery: “Goya’s Portraits: An Exhibition in the Making”

Janis Tomlinson, Director, University Museums, University of Delaware: “Goya in Perspective: Exhibitions 1974-2008”

Chinese New Year Celebration at the Crow Collection

Saturday, February 21, 2015, 11:00 am - 7:30 pm

Say goodbye to the Year of the Horse and celebrate the Year of the Ram at the Crow Collection’s signature Chinese New Year Festival. This ram themed extravaganza will be larger than ever expanding across Flora and Harwood Streets featuring an array of specialty booths, wellness activities, must-see entertainment, cultural performances, art activities and much more. This is a free event.

READ MORE

**YEAR
OF THE
RAM**



Plants Inside: The Atrium of John Portman's Hyatt Regency Hotel, Atlanta

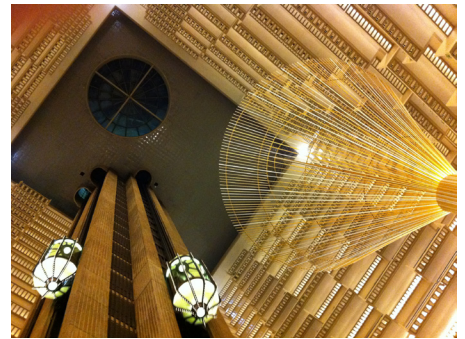
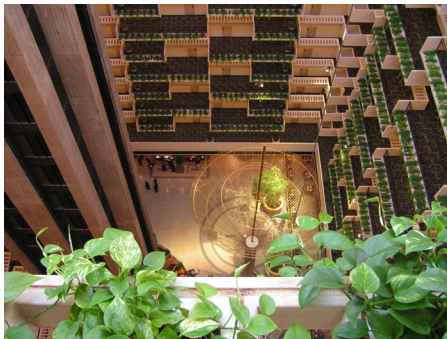
A lecture by Professor Penny Sparke, Modern Interiors Research Centre, Kingston University London.

Department of Art Education & Art History
The University of North Texas

The Department of Art Education and Art History at the University of North Texas is proud to sponsor a lecture by world-renowned design historian Penny Sparke on the innovative use of plants in the design of John Portman's groundbreaking 1967 hotel design.

Tuesday, February 10, 2015, 6:00 pm
UNT Art Building, Denton, Room 223
Free and open to the public

[READ MORE](#)



Gallery Exhibitions

Closing Soon:

Thurs. Jan. 22, 7:00 pm
Dialogues on Race
[CentralTrak](#)

CLOSES Jan. 23, 2015
Watercolor: All Level Exhibition
North Gallery
[UNT](#)

CLOSES Jan. 23, 2015
**Watercolor Spring 2015
All Level Exhibition**
Lightwell Gallery
[UNT](#)

CLOSES Jan. 23, 2015
**Drawing & Painting Spring 2015
Junior Review Exhibition**
Cora Stafford Gallery
[UNT](#)

CLOSES Jan. 25, 2015
**Faces of Impressionism: Portraits
from the Musée d'Orsay**
Renzo Piano Pavilion
[Kimbell Art Museum](#)

CLOSES Jan. 25, 2015
**Jade, or not Jade? That is the
Question**
[Crow Collection of Asian Art](#)

CLOSES Jan. 25, 2015
**Meet Me at the Trinity: Photographs
by Terry Evans**
[Amon Carter](#)

CLOSES Jan. 25, 2015
FOCUS: Jules de Balincourt
Fort Worth Modern

Jan. 26, 2015, 7:30 pm
Roger Beebe: Recycled Cinema
[CentralTrak](#)

CLOSES Feb. 1, 2015
**Flow into the Mystic: Marriage and
the Contemporary Artist**
[Tyler Museum of Art](#)

Current Exhibitions

**NEXT TOPIC: Carlos Martiel,
Performance Artist**
Feb. 5, 2015, 7:00 pm
[CentralTrak](#)

**An Old Friend And A
Moving Target**
Jan. 23 – Feb. 7, 2015
Visual Arts Building, Main Gallery
[UTD](#)

Ruin by Carlos Martiel
Feb. 7, 2015, 5:00 pm
[CentralTrak](#)

Gallery Exhibitions

Bouquets: French Still-Life Painting from Chardin to Matisse

Oct. 26, 2014 – Feb. 8, 2015

Chilton II Gallery

[Dallas Museum of Art](#)

Sharing Space: Gyorgy Beck and Sylvia Plachy

Jan. 20 – Feb. 14, 2015

[Gallery at UTA](#)

P.R.I.N.T. Press: Five Years of Collaborations

Jan. 17 – Feb. 14, 2015

[UNT Artspace Dallas](#)

Between the States & The American Civil War's Impact on Tyler

Through Feb. 15, 2015

[Tyler Museum of Art](#)

Bruce Wood: A Retrospective

Jan. 10 – Feb. 15, 2015

[Arlington Museum of Art](#)

States of the Union

Highlights from TCU Permanent Art Collection

Jan. 20 – Feb. 19, 2015

[Moudy Gallery](#)

Gallup Motel Butchering

Jan. 17 – Feb. 21, 2015

[CentralTrak](#)

The Mary Baskett Collection of Japanese Fashion

Oct. 25, 2014 – Feb. 22, 2015

[Crow Collection of Asian Art](#)

H.O. Robertson: A Self-Taught Texas Regionalist

Nov. 9, 2014 – Mar. 1, 2015

[Meadows Museum, SMU](#)

Goya: A Lifetime of Graphic Invention

Sep. 21, 2014 – Mar. 1, 2015

[Meadows Museum, SMU](#)

Collections, Cultures, and Collaborations Series: Lost in Trans

Jan. 29 – Mar. 7, 2015

[UNT Art Gallery](#)

Call and Response

Dallas Medianale 2015

Jan. 17 – Mar. 7, 2015

[MAC](#)

"1-7" MFA Group Exhibition

Jan. 16 – Mar. 7, 2015

[Fort Worth Contemporary Arts](#)

Loris Gréaud: The Unplayed Notes Museum

Jan. 18 – Mar. 21, 2015

[Dallas Contemporary](#)

Impressionist Paintings from the Reves Collection

Jan. 31 – Mar. 22, 2015

Focus II Gallery

[Dallas Museum of Art](#)

Youth Art Month

Feb. 18 – Mar. 29, 2015

[Arlington Museum of Art](#)

Seeing and Believing: Krishna in the Art of B.G. Sharma

Oct. 4, 2014 – Mar. 29, 2015

[Crow Collection of Asian Art](#)

FOCUS: RongRong&inri

Jan. 31 – Apr. 05, 2015

[Fort Worth Modern](#)

Small Worlds: Edouard Vuillard and the Intimate Art of the Nabis

Nov. 21, 2014 – Apr. 19, 2015

Level 2

[Dallas Museum of Art](#)

Frank Bowling: Map Paintings

Feb. 20, 2015 – May 2, 2015

Barrel Vault and Hanley, Lamont, Rachofsky, and Stoffel Galleries

[Dallas Museum of Art](#)

Melvin Edwards: Five Decades

Jan. 31 – May 10, 2015

[Nasher Sculpture Center](#)

Lone Star Portraits

May 13, 2014–May 10, 2015

[Amon Carter](#)

Benito Huerta: Axis Mundi v. 2

Feb. 25, 2014–May 17, 2015

[Amon Carter](#)

Remington and Russell

Feb. 28 –May 24, 2015

[Amon Carter](#)

Between Action and the Unknown: The Art of Kazuo Shiraga and Sadamasa Montonaga

Feb. 8, 2015 – July, 19, 2015

Hoffman Galleries

[Dallas Museum of Art](#)

Audubon's Beasts

Jan. 15 –Aug. 2, 2015

[Amon Carter](#)

American Still Life

Feb. 14 –Aug. 2, 2015

[Amon Carter](#)

Concentrations 58: Chosil Kil

Feb. 20 – Aug. 2, 2015

Barrel Vault and Hanley, Lamont, Rachofsky, and Stoffel Galleries

[Dallas Museum of Art](#)

Like Father, Like Son: Edward and Brett Weston

Feb. 21 – Aug. 23, 2015

[Amon Carter](#)

FRAMING DESIRE: Photography and Video

Feb. 21 – Aug. 23, 2015

[Fort Worth Modern](#)

Rock Crystal Ewer from the Keir Collection

May 27, 2014 – Sept. 27, 2015

[Level 3, Dallas Museum of Art](#)

Gallery Exhibitions & Upcoming Lectures

India, Art, Time and Place

Jan. 24 – Oct. 18, 2015
[Crow Collection of Asian Art](#)

Modern Opulence in Vienna: The Wittgenstein Vitrine

Nov. 15, 2014 – Oct. 18, 2015
Conservation Gallery
[Dallas Museum of Art](#)

Add to, Take Away: Artistry and Innovation in African Textiles

Nov. 8, 2014 – Dec. 6, 2015
Level 3
[Dallas Museum of Art](#)

Form/Unformed: Design from 1960 to the Present

Dec. 19, 2010 – Dec. 31, 2015
Tower Gallery
[Dallas Museum of Art](#)

Fierce Loyalty: A Samurai Complete

Opened Oct. 25, 2014
[Crow Collection of Asian Art](#)

Selections from the Permanent Collection

Sep. 21, 2014 – Dec. 31, 2015
[Fort Worth Modern](#)

Shepard Fairey

Citywide Street Mural Project
Ongoing
[Dallas Contemporary](#)

Benevolence and Wisdom: New Gifts from the Collection of Trammell and Margaret Crow

Feb. 14, 2015 – Jan. 17, 2016
[Crow Collection of Asian Art](#)

Upcoming Lectures

Ad Astra Lecture Series: Sean B. Carroll

Jan. 14, 2015, 7:00 pm
The Horchow Auditorium
[Dallas Museum of Art](#)

State of the Arts: Performers

Thurs., Jan. 22, 2015, 7:00 pm
[Dallas Museum of Art](#)

Afternoon Gallery Talk

H.O. Robertson, Texas Regionalist
Sam Ratcliffe, Head, Bywaters
Special Collections, SMU and Shelley
DeMaria, Curatorial Assistant,
Meadows Museum
Fri., Jan. 23, 2015, 12:15 pm
[Meadows Museum, SMU](#)

The Madonnas of Leningrad Debra Dean (2006)

Fri., Jan. 23, 2015, 5:30 – 7:00 pm
[Kimbell Art Museum](#)

Gallery Presentation and Reception: Art Beyond Sight

Elaine Pawlowicz, UNT, and students
Sat., Jan. 24, 2015, 11:00am – 2:00pm
[Meadows Museum, SMU](#)

Desire: A Healthy Perspective

Sat., Jan. 24, 2015, 2:00 pm
[Dallas Museum of Art](#)

Special Lecture: RongRong&inri

Jan. 27, 2015, 7:00 pm
[Fort Worth Modern](#)

Bouquets: A Curator's Perspective

Thurs., Jan. 29, 2015, 7:00 p.m.
[Dallas Museum of Art](#)

Lise Eliot: Sex, Brain and Culture: The Science and Pseudoscience of Gender Difference

Thurs., Jan. 29, 2015, 7:30 pm
Jonsson Performance Hall
[UTD](#)

Contemporary Japanese Fashion Symposium

Sat., Jan. 31, 2015, 10:00am - 4:00pm
[Crow Collection of Asian Art](#)

Challenging Voices: A Conversation on Art and the Ethical Imperative

Wed., Feb. 4, 2015, 7:00 p.m.
[Dallas Museum of Art](#)

International Symposium – Curating Goya

Sat., Feb. 7, 2015, 10:00am – 3:00pm
[Meadows Museum, SMU](#)

Opening Day Tour: Between Action and the Unknown: The Art of Kazuo Shiraga and Sadamasa Montonaga

Sun., Feb. 8, 2015, 3:00 p.m.
[Dallas Museum of Art](#)

Anita Sarkeesian: Tropes vs. Women in Video Games

Wed., Feb. 11, 2015, 7:30 pm
Edith O'Donnell Arts & Technology
Building, Lecture Hall
[UTD](#)

The Search for Humanity

Luis Martín, Professor Emeritus of
History, SMU
Fri., Feb. 13, 2015, 10:30 am
[Meadows Museum, SMU](#)

Joaquín Mir's Allegory

Nicole Stevens, Art History Program,
University of Dallas
Fri., Feb. 13, 2015, 12:15 pm
[Meadows Museum, SMU](#)

Elegy and Rejuvenation in Jacques- Louis David's "Anger of Achilles"

Thomas E. Crow, Rosalie Solow
Professor of Modern Art, Institute of
Fine Arts, New York University
Fri., Feb. 13, 2015, 6:00 pm
[Kimbell Art Museum](#)

Pacino to Pollock: How Conservation Impacts the Way Paintings Are Seen and Interpreted

Lauren Bradley, assistant conservator
of paintings, Kimbell Art Museum
Wed., Feb. 18, 2015, 2015 – 12:30 pm
[Kimbell Art Museum](#)

Upcoming Lectures, Concerts & Performances, and Films

DMA Partners: The Silk Road from Rome to China and India

Thurs., Feb. 19, 2015, 6:30 p.m.

[Dallas Museum of Art](#)

Brettell Lecture: Painting Techniques of the Impressionists

Thurs., Feb. 19, 2015, 7:00 p.m.

[Dallas Museum of Art](#)

The Search for Humanity

Luis Martín, Professor Emeritus of History, SMU

Fri., Feb. 20, 2015, 10:30 am

[Meadows Museum, SMU](#)

Stealing History: Tomb Raiders, Smugglers, and the Looting of the Ancient World

Fri., Feb. 20, 2015, 9:00 p.m.

[Dallas Museum of Art](#)

Walter Ned Skip Holladsworth

Wed., Feb. 25, 2015, 7:30 pm

Jonsson Performance Hall

[UTD](#)

Portraits in Conversation: Francisco de Goya and Vicente López y Portaña

Olivier Meslay, Associate Director of Curatorial Affairs and the Barbara Thomas Lemmon Curator of European Art, DMA

Nicole Atzbach, Curator, Meadows Museum

Thur., Feb. 26, 2015, 6:00 pm

[Meadows Museum, SMU](#)

The Connoisseur's Eye, the Collector's Heart: Asian Art in America

Thurs., Feb. 26, 2015, 7:00 – 8:30 pm

[Crow Collection of Asian Art](#)

Dr. Michael Puett Why Classical Chinese Philosophy Still Matters in the Age of Globalization

Thurs., Feb. 26, 2015, 7:30 pm

Jonsson Performance Hall

[UTD](#)

The Search for Humanity

Luis Luis Martín, Professor Emeritus of History, SMU

Fri., Feb. 27, 2015, 10:30 am

[Meadows Museum, SMU](#)

Upcoming Concerts & Performances

Jazz in the Atrium

Thurs., 6:00-8:00 p.m.

[Dallas Museum of the Art](#)

Bancroft Family Concerts

Selected Saturdays

[Dallas Museum of Art](#)

Jim Riggs and The Official Texas

Jazz Orchestra

Fri., Jan. 23, 2015, 8:00 pm

Alexander Clark Center

[UTD](#)

Cliburn at the Kimbell

Lawrence Brownlee, tenor

Thur., Jan. 29, 2015, 7:30 pm

[Kimbell Art Museum](#)

Tom Reynolds-Guitar and Carl Hillman-Bass

Fri., Jan. 30, 2015, 5:30 pm

[Kimbell Art Museum](#)

Lin/Castro-Balbi Duo

Sat., Jan. 31, 2015, 8:00 pm

Jonsson Performance Hall

[UTD](#)

Tom Reynolds-Guitar and Paul Unger-Bass

Fri., Feb. 6, 2015, 5:30 pm

[Kimbell Art Museum](#)

Chad Ibison

Fri., Feb 6, 2015, 8:00 pm

Jonsson Performance Hall

[UTD](#)

Texas Camerata Musica Transalpina

Sat., Feb. 7, 2015, 2:00 pm

[Kimbell Art Museum](#)

Paul Taylor Dance Company

Sat., Feb. 7, 2015, 6:00 pm

Eisemann Center

[UTD](#)

Orchestra of New Spain

Sat., Feb. 7, 2015, 6:30 pm

[Meadows Museum, SMU](#)

Fort Worth Classic Guitar Society Pepe Romero

Thurs., Feb. 12, 2015, 7:30 pm

[Kimbell Art Museum](#)

Tom Reynolds-Guitar and James Driscoll-Bass

Fri., Feb. 13, 2015, 5:30 pm

[Kimbell Art Museum](#)

Fort Worth Classic Guitar Society Pepe Romero

Sat., Feb. 14, 2015, 7:30 pm

[Kimbell Art Museum](#)

Late Night Happy Hour Performance featuring the Obscure Dignitaries

Fri., Feb. 20, 2015, 6:00-7:00 p.m.

[Dallas Museum of Art](#)

Late Night Main Stage featuring Meadows World Music Ensemble

Fri., Feb. 20, 2015, 8:00-9:00 p.m.

[Dallas Museum of Art](#)

Late Night After Hours Music Showcase featuring Fox and the Bird

Fri., Feb. 20, 2015, 10:00-11:00 p.m.

[Dallas Museum of Art](#)

Chinese New Year Celebration

Sat., Feb. 21, 2015, 2:00 pm

Alexander Clark Center

[UTD](#)

Journeys with the Virtuosi of Italy and Spain, Chamber Music Society of Fort Worth

Feb. 21, 2015, 2:00 pm

[Fort Worth Modern](#)

Concerts & Performances, and Films

Tom Reynolds-Guitar and Carl Hillman-Bass

Fri., Feb. 27, 2015, 5:30 pm

[Kimbell Art Museum](#)

Doom McCoy and the Death Nugget

Feb. 19 – Feb. 28, 2015

University Theatre

[UTD](#)

Love Us for Good

Feb. 27 – Mar. 13, 2015

Edith O'Donnell Arts & Technology Building, 1st floor Gallery

[UTD](#)

Films

Miss Julie

Magnolia at the Modern

Jan. 23 – Jan. 25, 2015

[Fort Worth Modern](#)

The Shooting

ArthouseFW – Students of Roger Corman

Jan. 24 – Jan. 24, 2015

[Fort Worth Modern](#)

Two Days, One Night

Magnolia at the Modern

Jan. 30 – Feb. 01, 2015

[Fort Worth Modern](#)

Cinematheque

Wed., Feb. 4, 2015, 7:30 pm

Jonnson Performance Hall

[UTD](#)

Vincent Scully: An Art Historian

Among Architects (2010)

Sun., Feb. 8, 2015, 2:00 pm

[Kimbell Art Museum](#)

Piranha

ArthouseFW –Late Night

Feb. 6, 2015

[Fort Worth Modern](#)

ONCE

Feb. 8, 2015

[Fort Worth Modern](#)

John

National Theatre Live

Feb. 11, 2015

[Fort Worth Modern](#)

Some Like It Hot (1959)

Magnolia at the Modern

Feb. 14, 2015

[Fort Worth Modern](#)

Still Alice

Magnolia at the Modern

Feb. 13, 2015 – Feb. 15, 2015

[Fort Worth Modern](#)

The New Rijksmuseum (2013)

Sun., Feb. 22, 2015, 2:00 pm

[Kimbell Art Museum](#)

Mr. Turner

Magnolia at the Modern

Feb. 20 – Feb. 22, 2015

[Fort Worth Modern](#)

The Last Picture Show

ArthouseFW – Students of Roger Corman

Feb. 28 – Feb. 28, 2015

[Fort Worth Modern](#)

Leviathan

Magnolia at the Modern

Feb. 27 – Mar. 01, 2015

[Fort Worth Modern](#)

AND A HAPPY NEW YEAR TO YOU!



- From Dr. Richard Brettell, Dr. Sarah Kozlowski, Pierrette Lacour, and Tricia Stout.

